



Guest Activity Guide

Mountain Activities * Family Fun * Dining

We've pulled together some of our favorite mountain activities and places to eat. This isn't an endorsement, just sharing what we love! If you find a gem during your stay, please share in the guest book. Have fun!

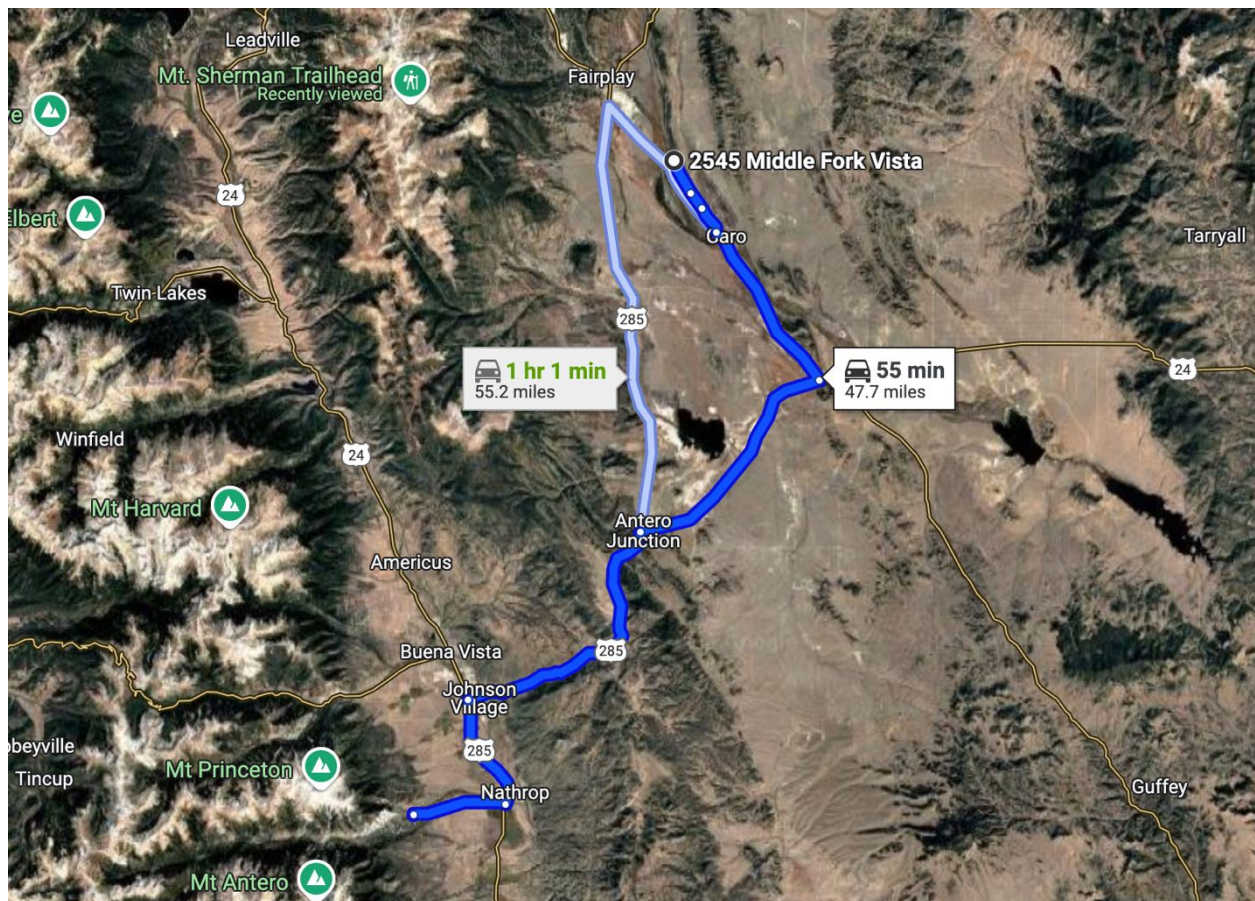
Mountain Activities



Mount Princeton Hot Springs



- **Location:** Nathrop, CO
- **Distance from Cabin:** Approximately forty seven miles
- **Description:** Nestled in the San Isabel National Forest, Mount Princeton Hot Springs Resort offers a serene retreat with natural geothermal waters. Guests can enjoy various pools, including creekside hot springs and a historic bathhouse. The resort also provides access to nearby hiking trails, making it a perfect blend of relaxation and adventure. Reservations are recommended, especially during peak seasons.
- **Website:** [Mount Princeton Hot Springs Resort](https://mtprinceton.com/)
<https://mtprinceton.com/>



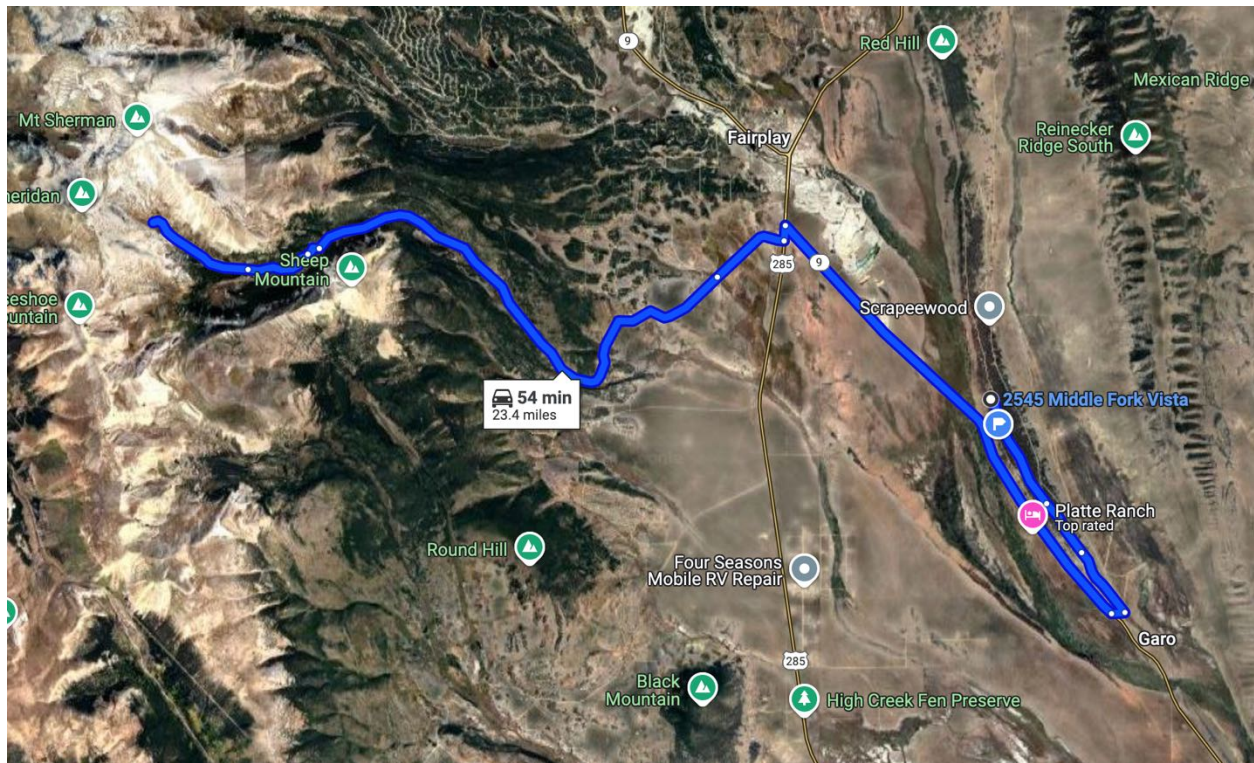
Mountain Activities



Hiking Mount Sherman



- **Location:** Near Fairplay, CO
- **Distance from Cabin:** Approximately fifty four miles
- **Description:** Mount Sherman stands at 14,036 feet, offering hikers a relatively accessible "14er" experience. The standard route is via the Fourmile Creek Trailhead, leading adventurers through historic mining ruins and alpine terrain. Due to high elevation, it's essential to start early to avoid afternoon thunderstorms and to acclimate properly to prevent altitude sickness.
- **Website:** [Mount Sherman Hiking Guide](https://www.alltrails.com/trail/us/colorado/mount-sherman-trail-via-four-mile-creek-road)
<https://www.alltrails.com/trail/us/colorado/mount-sherman-trail-via-four-mile-creek-road>



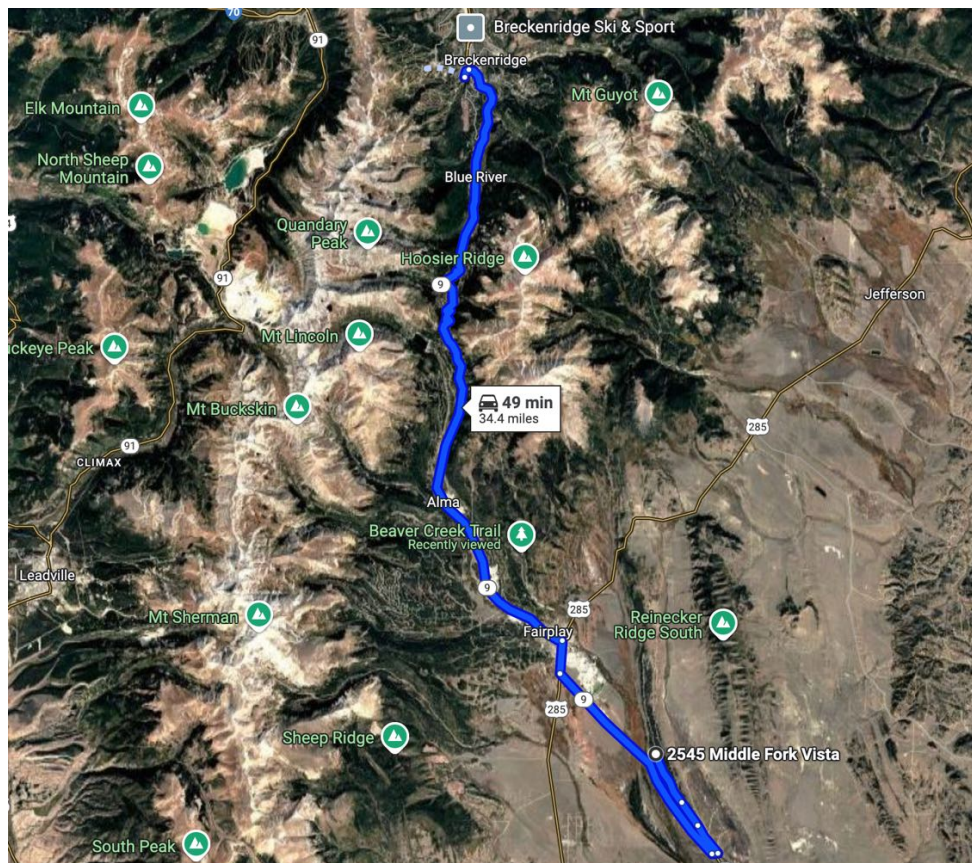
Mountain Activities



Breckenridge Mountain Resort



- **Location:** Breckenridge, CO
- **Distance from Cabin:** Approximately thirty four miles
- **Description:** Breckenridge Mountain Resort is a year-round destination. In winter, it boasts expansive ski terrains suitable for all levels. Summer transforms the resort into a hub for mountain biking, alpine slides, and scenic gondola rides. The charming town of Breckenridge complements the resort with dining, shopping, and cultural events. It's advisable to check the resort's schedule for seasonal activities.
- **Website:** [Breckenridge Resort](https://www.breckenridge.com/)
<https://www.breckenridge.com/>



Mountain Activities



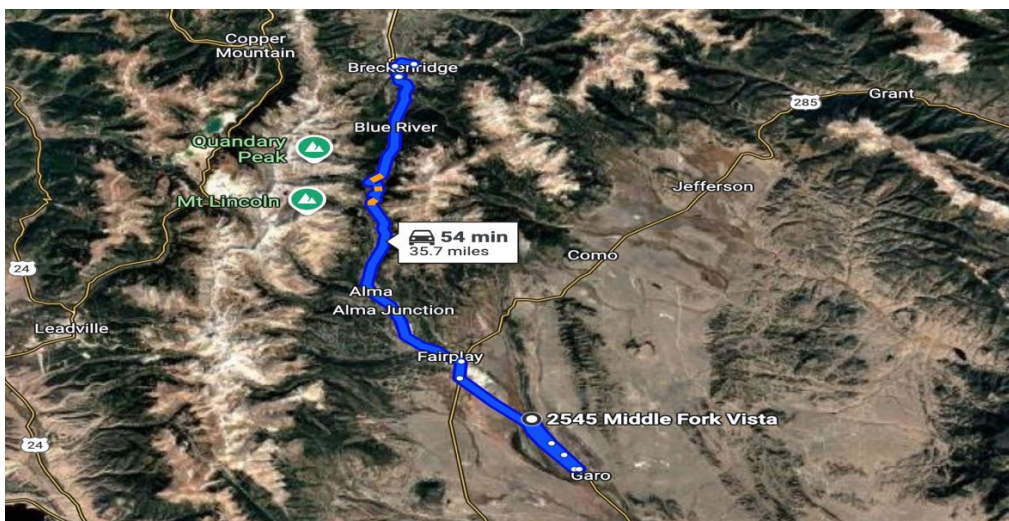
Wellington Bike Park and Pump Track



- **Location:** 710 Wellington Road, Breckenridge, CO 80424
- **Distance** from The Soggy Beaver Cabin: Approximately thirty five miles

Description: The Wellington Bike Park and Pump Track in Breckenridge is a premier destination for cyclists of all ages and skill levels. The park features a large pump track, three flow trails, a Strider track for young riders, and a skills area with jump features. Designed to cater to both beginners and experienced riders, the park offers a dynamic environment to practice and enhance biking skills. The pump track, constructed by FlowRide Concepts, is packed with berms, rollers, and a variety of line options, ensuring a fun and engaging experience for all. Adjacent to the bike park is the Wellington Trail, a 0.75-mile singletrack that connects riders to Breckenridge's extensive trail network, offering opportunities for extended rides. Visitors appreciate the park's well-maintained facilities and its suitability for family outings. It's recommended to wear appropriate protective gear and check weather conditions before visiting.

Website: [Wellington Bike Park and Pump Track](#)



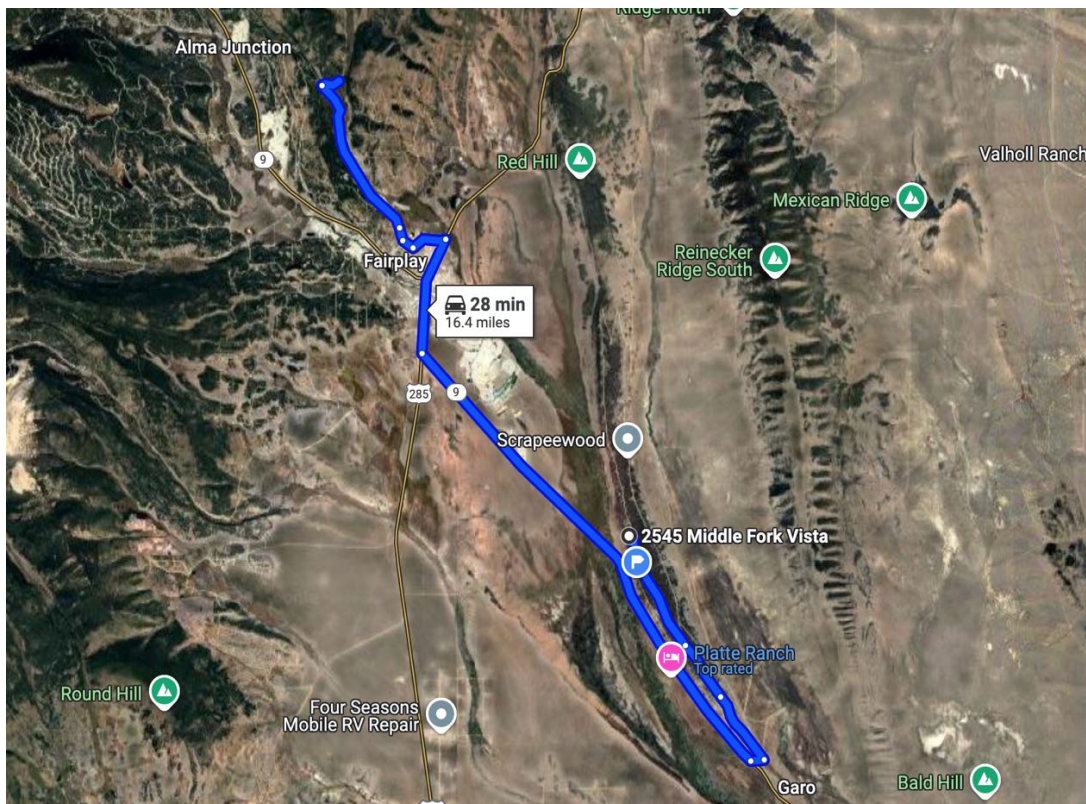
Mountain Activities



Beaver Creek Trails



- **Location:** Beaver Creek, CO
- **Distance from Cabin:** Approximately 16 miles
- **Description:** Beaver Creek offers a variety of trails suitable for all skill levels, from leisurely walks to challenging hikes. The Beaver Creek Overlook Trail provides stunning views of the surrounding mountains and valleys. Hikers often encounter diverse wildlife and vibrant wildflower meadows. It's advisable to check trail conditions and weather forecasts before embarking.
- **Website:** [Beaver Creek Trail Maps](https://www.beavercreek.com/the-mountain/about-the-mountain/trail-map.aspx)
<https://www.beavercreek.com/the-mountain/about-the-mountain/trail-map.aspx>



Mountain Activities

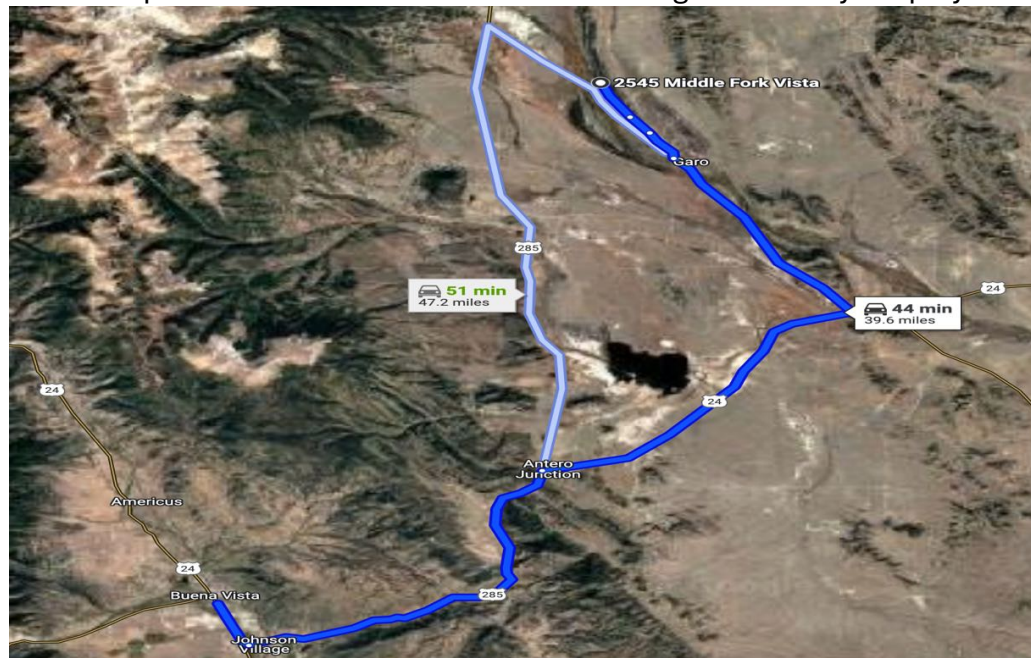


Local Fishing



- **Fly Fishing Guides:** Fairplay offers access to gold-medal waters ideal for fly fishing. Local guides provide expertise on the best spots and techniques. It's recommended to book guided trips in advance.
- **Public Access Streams:** The Middle Fork of the South Platte River near Fairplay provides public fishing access. Anglers should be aware of private property boundaries and adhere to local regulations.
- **Fishing Licenses:** Colorado fishing licenses are mandatory for anglers aged 16 and above. Licenses can be purchased online through the Colorado Parks and Wildlife website or at local retailers.
- **Public Lake Fishing Locations:** Antero Reservoir and Spinney Mountain Reservoir are popular spots offering opportunities to catch trout and pike. Both are within a short drive from Fairplay.
- **Website:** [Fairplay Fishing Guide](https://www.uncovercolorado.com/fishing-near-bailey-fairplay-co/)

<https://www.uncovercolorado.com/fishing-near-bailey-fairplay-co/>



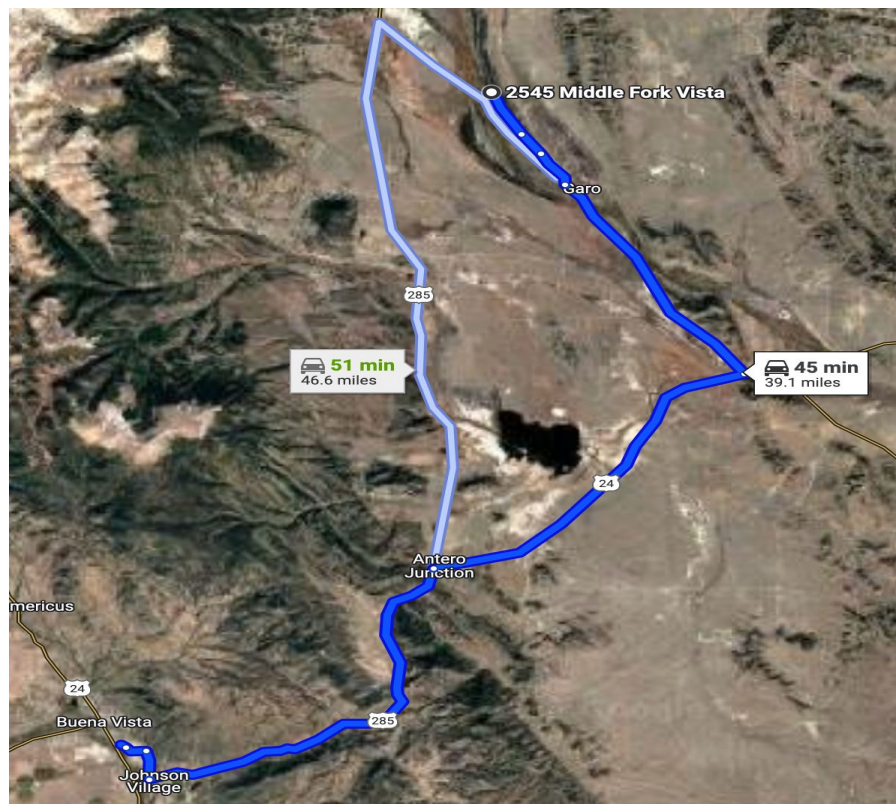
Mountain Activities



River Rafting



- **Location:** Arkansas River, Buena Vista, CO
- **Distance from Cabin:** Approximately thirty five miles
- **Description:** The Arkansas River near Buena Vista is renowned for its whitewater rafting adventures, catering to both beginners and seasoned rafters. Browns Canyon National Monument offers scenic views combined with thrilling rapids. Several local outfitters provide guided trips, with varying difficulty levels. It's essential to wear appropriate gear and follow safety instructions provided by guides.
- **Website:** [Browns Canyon Rafting](https://www.raftecho.com/)
<https://www.raftecho.com/>



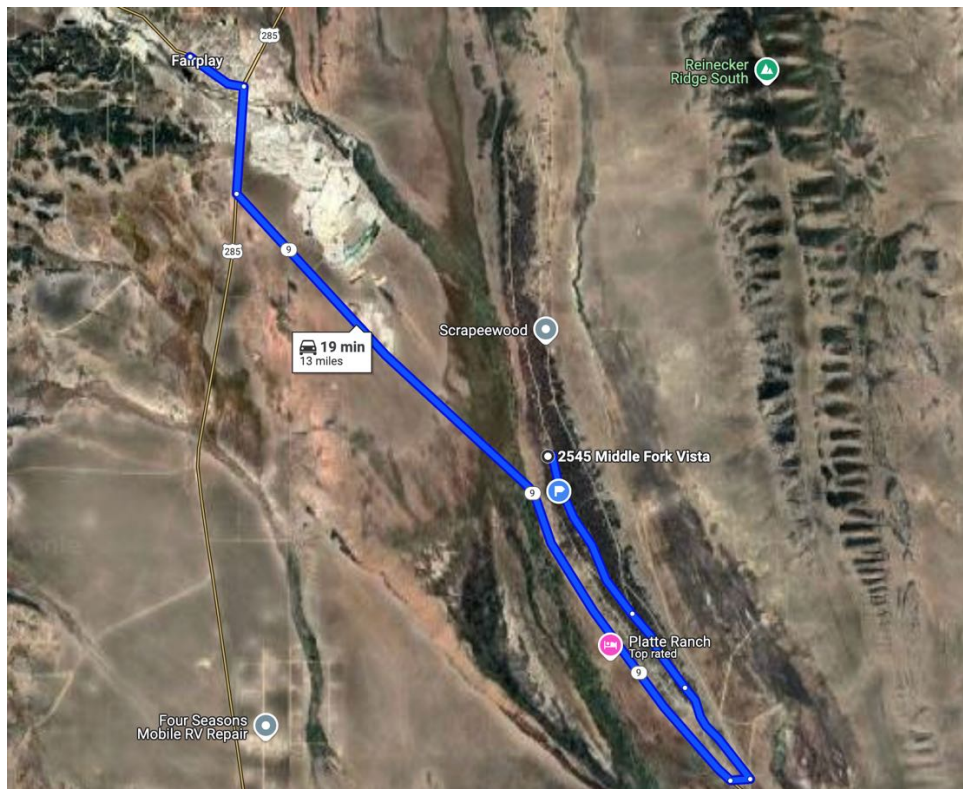
Mountain Activities



South Park City Museum



- **Location:** Fairplay, CO
- **Distance from Cabin:** Approximately nineteen miles
- **Description:** This open-air museum authentically recreates an 1880s mining town with 43 historic buildings and over 60,000 artifacts. Visitors can explore structures like a saloon, blacksmith shop, and schoolhouse, gaining insight into Colorado's rich mining heritage. Interactive exhibits make it engaging for all ages. The museum is typically open from mid-May to mid-October.
- **Website:** [South Park City Museum](http://www.southparkcity.org/)
<http://www.southparkcity.org/>



Mountain Activities

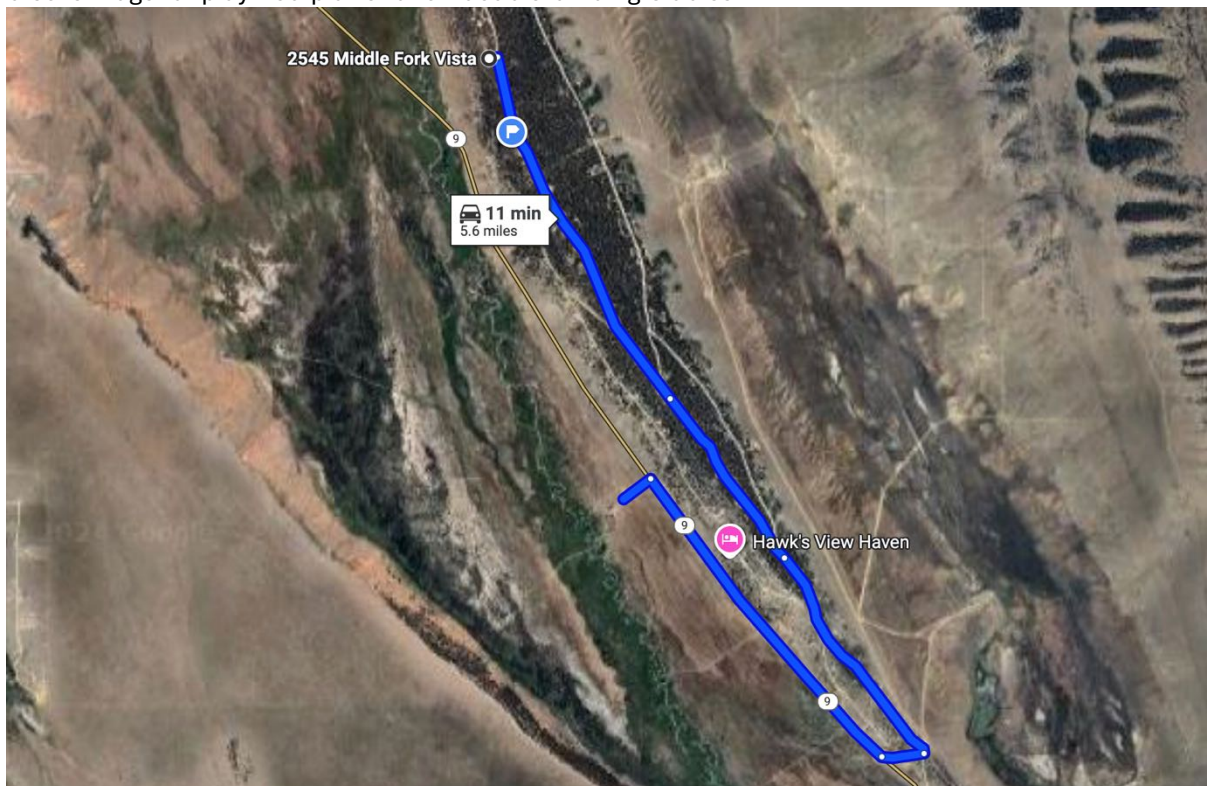


Platte Ranch Stables



- **Location:** Fairplay, CO
- **Distance from Cabin:** Approximately five miles
- **Description:** Offering horseback riding experiences across an 8,000-acre ranch, guests traverse the South Platte River and ascend scenic mountainsides. Suitable for all skill levels, it's an excellent way to immerse in the natural beauty of the area. Reservations are recommended, and riders should wear appropriate attire.
- **Website:** Platte Ranch & Double B Riding Stables

<https://www.coloradomountainactivities.com/breckenridge-area/horseback-riding-tours-in-breckenridge/fairplay/150-platte-ranch-double-b-riding-stables>



Mountain Activities

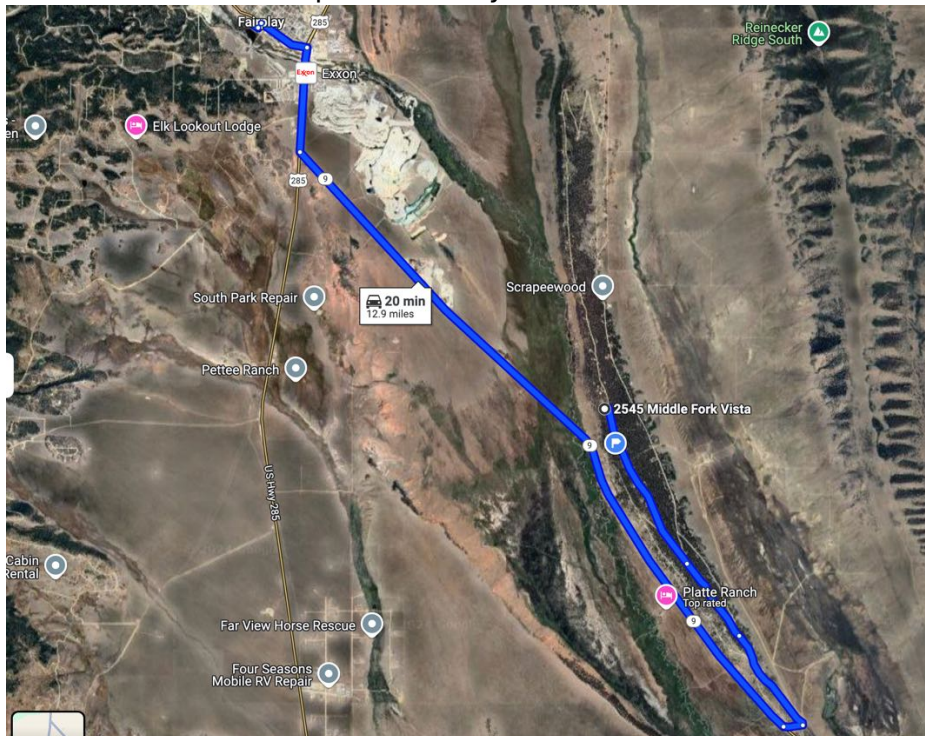


Coyote Creek Art Studios



- **Location:** 419 Front Street, Fairplay, CO 80440
- **Distance from Cabin:** Approximately twelve miles
- **Description:** Coyote Creek Art Studios is a local artists' collective showcasing unique, locally created art, including paintings, jewelry, glasswork, pottery, photography, and sculptures. Voted the "Best Art Gallery" in South Park, it's a must-visit for art enthusiasts. The gallery also offers wine tastings, classes, and workshops. Visitors appreciate the diverse art selection and the opportunity to support local artists.
- **Website:** [Coyote Creek Arts](https://www.coyotecreekarts.com/)

<https://www.coyotecreekarts.com/>



Mountain Activities

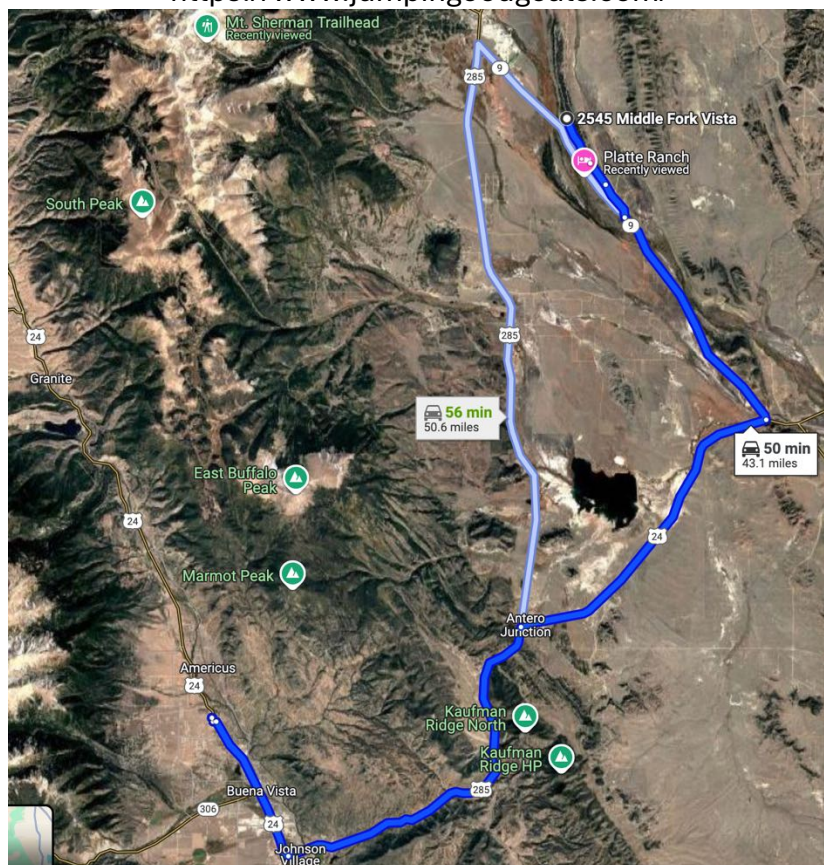


Jumpin' Good Goat Dairy



- **Location:** 31700 US Highway 24 N, Buena Vista, CO 81211
- **Distance from Cabin:** Approximately forty miles
- **Description:** This family-owned dairy produces all-natural, small-batch artisan goat cheese. Visitors can sample cheeses, tour the farm, and interact with the goats. The farm offers guided tours year-round, with milking tours available from late March to late September. It's a delightful experience for families and cheese lovers alike. Guests often highlight the friendly staff and delicious cheeses.
- **Website:** [Jumpin' Good Goat Dairy](https://www.jumpinggoodgoats.com/)

<https://www.jumpinggoodgoats.com/>



Mountain Activities



Brown's Canyon Adventure Park



- **Location:** Buena Vista, CO
- **Distance from Cabin:** Approximately forty miles
- **Description:** An aerial adventure park offering zip lines, rope courses, and other thrilling activities suitable for various skill levels. Set against the scenic backdrop of Brown's Canyon, it's perfect for adventure seekers and families. Safety is a priority, with trained staff ensuring a secure experience. Visitors praise the challenging courses and beautiful surroundings.
- **Website:** [Brown's Canyon Adventure Park](https://noahsark.com/trips/adventure-aerial-park/)
<https://noahsark.com/trips/adventure-aerial-park/>



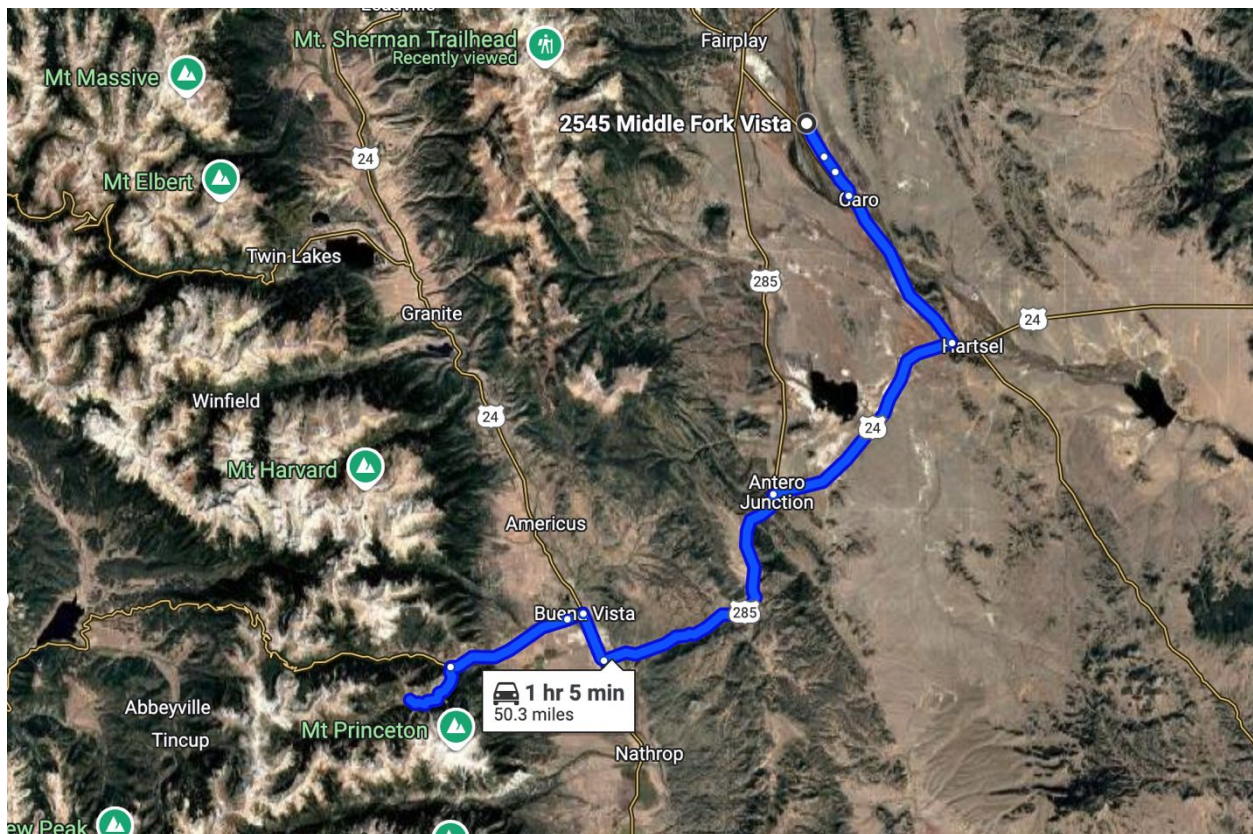
Mountain Activities



Cottonwood Lake



- **Location:** Buena Vista, CO
- **Distance from Cabin:** Approximately fifty miles
- **Description:** A picturesque alpine lake offering opportunities for fishing, kayaking, and picnicking. Surrounded by the San Isabel National Forest, it's an ideal spot for relaxation and nature appreciation. The area is accessible via a well-maintained road, but it's advisable to check conditions during winter months. Visitors often mention the serene environment and stunning views.
- **Website:** [Cottonwood Lake Information](https://www.tripadvisor.com/Attraction_Review-g33332-d2233652-Reviews-Cottonwood_Lake-Buena_Vista_Chaffee_County_Colorado.html)
https://www.tripadvisor.com/Attraction_Review-g33332-d2233652-Reviews-Cottonwood_Lake-Buena_Vista_Chaffee_County_Colorado.html



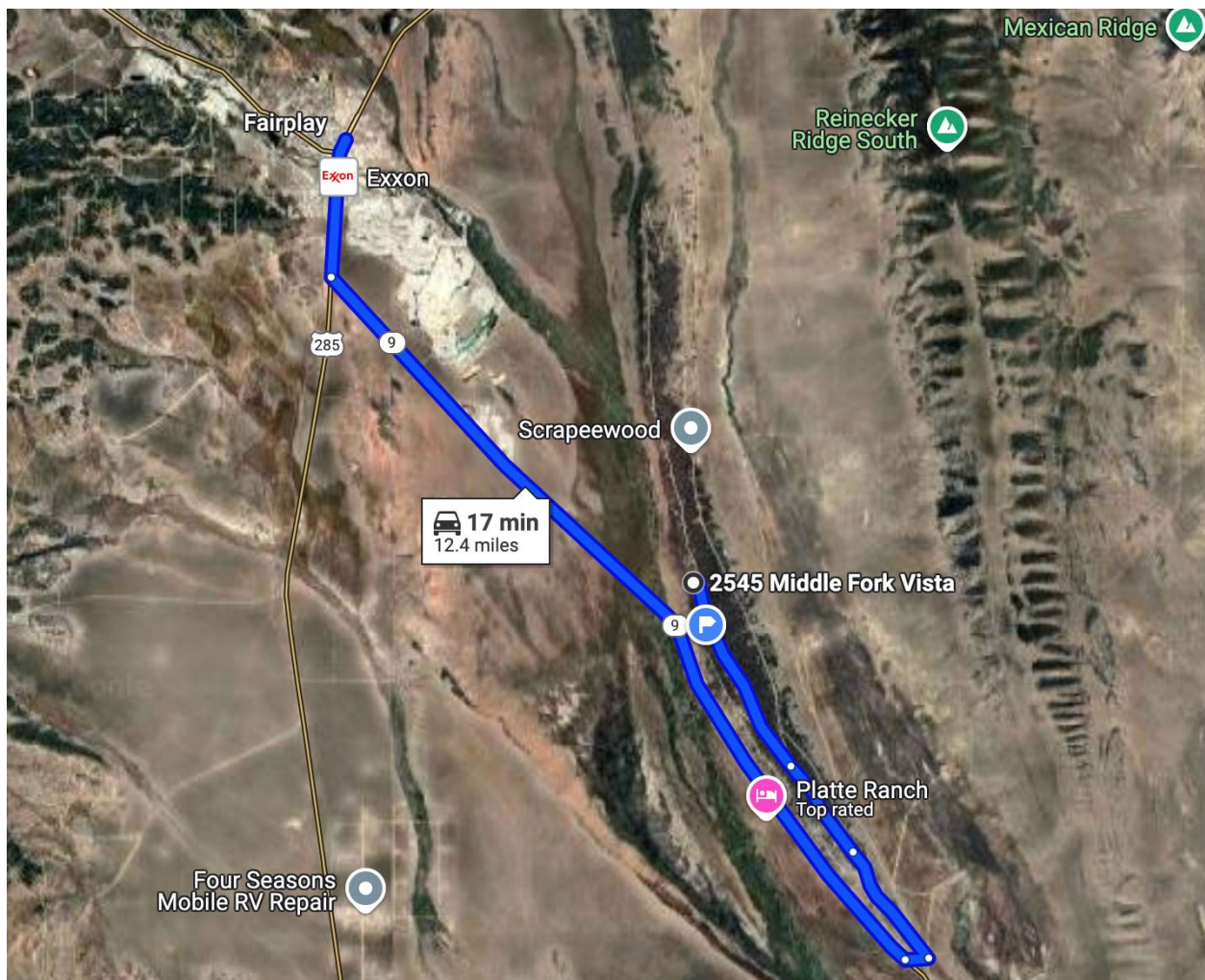
Mountain Dining



High Side Brewery



- **Location:** Fairplay, CO
- **Distance from Cabin:** Approximately twelve miles
- **Description:** A local brewery offering a variety of craft beers brewed on-site. With a cozy taproom and occasional live music, it's a great place to unwind. The brewery also serves a selection of pub fare to complement their beers. Patrons appreciate the friendly atmosphere and quality brews.
- **Website:** <https://highsidebrewing.com/location/fairplay/>



Mountain Dining



Otto's



- **Location:** Fairplay, CO
- **Distance from Cabin:** Approximately fourteen miles
- **Description:** A popular eatery known for its diverse menu, including vegan options. Otto's offers a casual dining experience with both indoor and outdoor seating. It's advisable to check their current hours and menu offerings. Guests often commend the delicious food and accommodating service.
- **Website:** [Otto's Fairplay](https://www.ottosfairplay.com/)



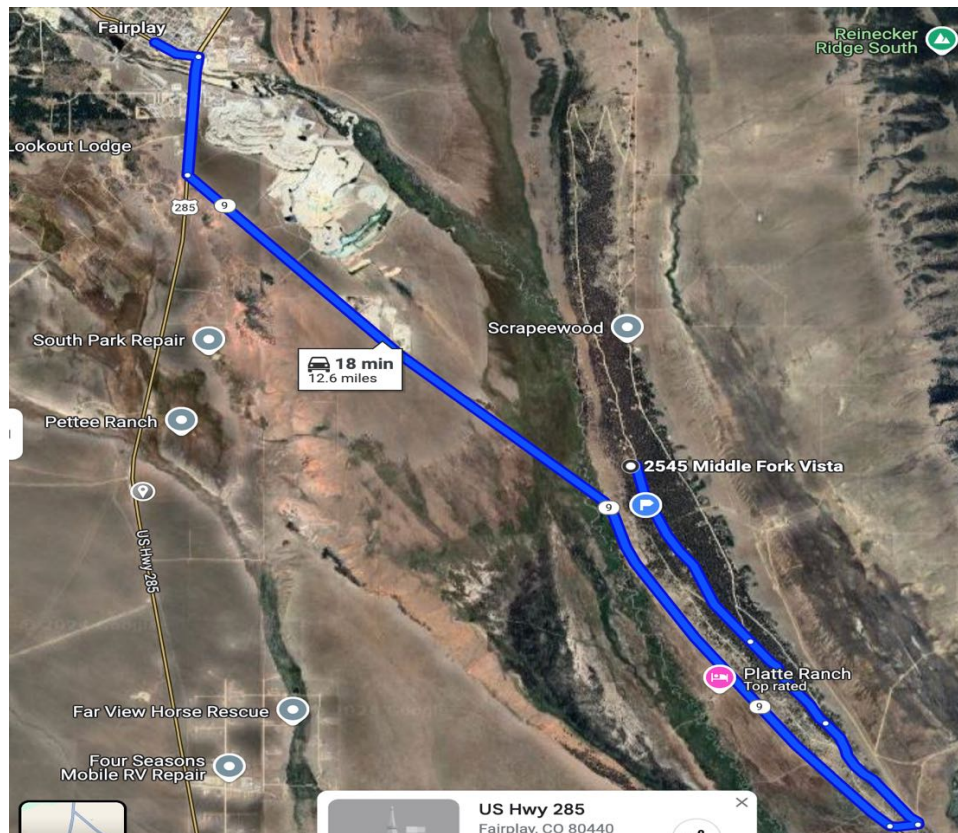
Mountain Dining



Mr. Burro Café



- **Location:** Fairplay, CO
- **Distance from Cabin:** Approximately twelve miles
- **Description:** A charming cafe offering a variety of breakfast and lunch options, including burritos and sandwiches. Known for its friendly service and cozy atmosphere, it's a favorite among locals and visitors. The cafe has received positive reviews for its flavorful dishes and welcoming staff.
- **Website:** [Mr. Burro Cafe](http://Mr.BurroCafe.com)



Mountain Dining



Highline Cafe & Saloon



- **Location:** Fairplay, CO
- **Distance from Cabin:** Approximately thirteen miles
- **Description:** A local establishment offering a mix of American fare and beverages. The saloon ambiance provides a laid-back setting for dining and socializing. It's recommended to check their current operating hours and menu. Visitors appreciate the rustic charm and friendly service.
- **Website:** [Highline Cafe & Saloon](#)



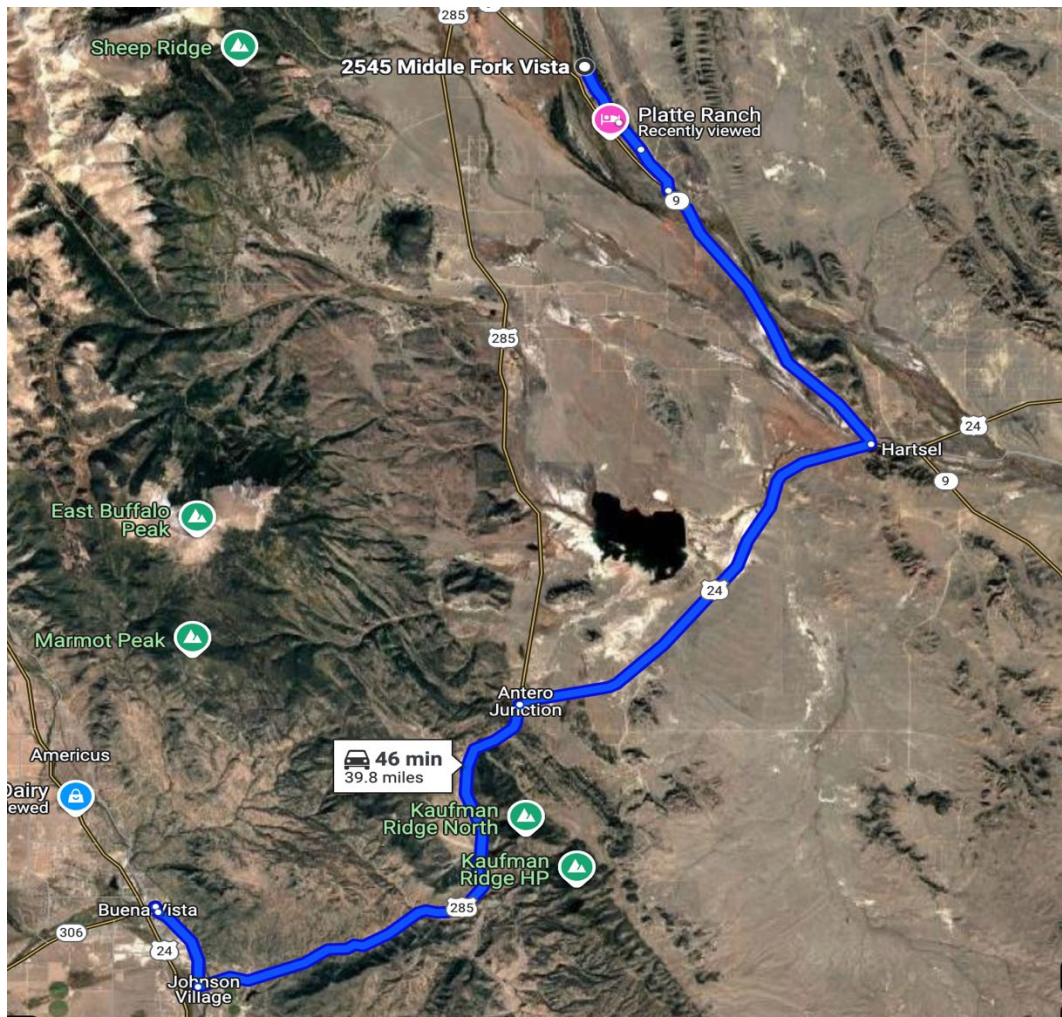
Mountain Dining



House Rock Kitchen



- **Location:** Buena Vista, CO
- **Distance from Cabin:** Approximately forty miles
- **Description:** A contemporary restaurant focusing on healthy, locally sourced dishes. The menu features a variety of



Mountain Dining



Crave BV



- **Location:** 300 E Main St, Buena Vista, CO 81211
- **Distance from The Soggy Beaver Cabin:** Approximately forty miles
- **Description:** Crave BV is a contemporary eatery specializing in artisan pizzas and Italian-inspired dishes. The menu features a variety of options, including gluten-free choices like the Bee Sting and Pep Rally pizzas. The restaurant boasts a spacious, modern interior adorned with fresh herb plantings, creating a vibrant and inviting atmosphere. Guests can also enjoy a full bar with a selection of wines on tap. Crave BV is committed to quality, sourcing local and organic ingredients whenever possible. It's an excellent spot for families, couples, and groups seeking a casual yet refined dining experience. Patrons frequently praise the delicious food, friendly staff, and lively ambiance.
- **Website:** [Crave BV](https://www.cravebv.com)

